

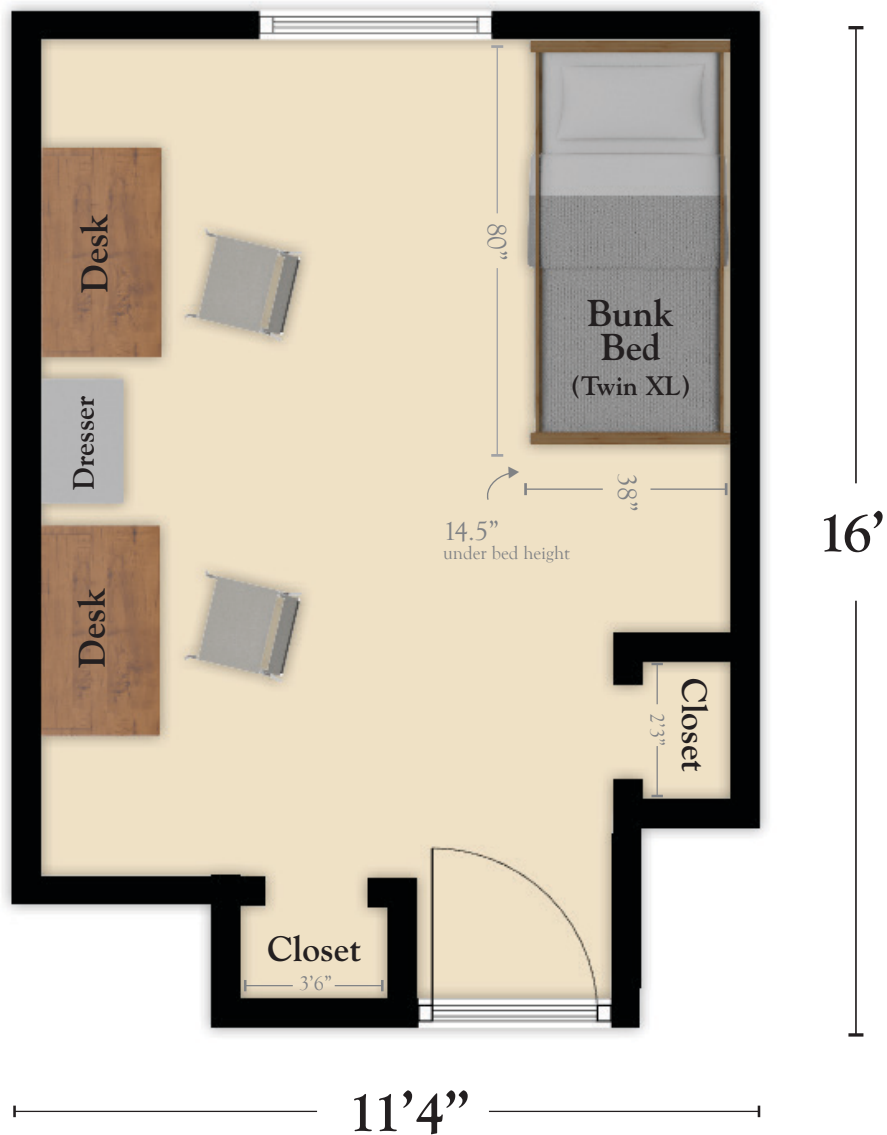
ST. SCHOLASTICA HALL

Residence Director (RD)

Sarah Eisenmenger

School Year Phone: 913.360.8000

St. Scholastica Hall opened fall 2005. The name honors St. Scholastica, twin sister of St. Benedict, as well as the graduates of one of the college's founding institutions, Mount St. Scholastica College. The facility is four stories with room for 141 freshmen women.



HELPFUL DIMENSIONS

- Room: 11'4" x 16'
- Closet: 3'6" x 2'3"
- Desk (top): 3'6" x 2'
- Window (includes blinds): 5'2" x 3'2"
- Bed: Twin XL mattress, 14.5" under bed height
- Dresser (6 drawers): 23" x 14" x 7"



Residence Life Office: 913.360.7500

VIRTUAL TOURS, 360° PANORAMAS, AND PHOTOS ONLINE: Benedictine.edu/ResidenceLife



Room (Occupancy 2)



Shower/Bathroom



Lounge



Kitchen



Bathroom



Exterior



Closet

ADDITIONAL HALL INFO

Appliances

The hall has a large community kitchen with an adjacent dining space equipped with a refrigerator, stove, oven, microwave, large island, and tables and chairs. Kitchen utensils are available for check-out.

Bathrooms

Two communal bathrooms on each floor (except for only one on first floor).

Classroom and Seminar Room

A modern classroom with current technological equipment is found on the first floor.

Adhesives and Wall Attachments

May use push pins or blue painter's tape to hang items on the wall.

Accessibility

All four exterior entrances of the hall, the elevator, meet ADA requirements.

Laundry & Vending

The first floor laundry room includes five washers and six dryers. The machines are free to use. The vending area is located in the laundry room.

Lounges

The first floor features include a main lounge with a stone fireplace and flat screen TV; large recreation room/kitchen; staff office. Each of the other three floors also includes a lounge used for community life, studying, and programs.

Recreation

Residents may check out many recreational items from the staff office including, DVD player, board games, and craft supplies.

Security

A state of the art Access Control System electronically controls and secures exterior, floor, and room entrances throughout the hall. Residents will be issued keycards that give them access to the Hall, their floors, and rooms.